



your



Tips and trends for homeowners, buyers and sellers

Childproofing Your Home

Childproofing your home is essential for keeping children who may be spending time in the space safe from potential dangers. Here are some tips to help in your efforts to keep kids safe.

► Doorknob covers

One of the first steps in childproofing your home is to ensure your kids can't get into rooms or areas they aren't supposed to be in. Doorknob covers help prevent a child from properly grabbing, turning and opening doors. They should be placed on all doors that lead out of your home, bathroom doors and other rooms that aren't childproofed.

► Cabinet locks

Securing your cabinets is another safety precaution when you have young children in your home. Internal locks can be screwed into the inside of your cabinet, although they are prone to breaking. External locks can be attached to the outside of the cabinet, but you must remember to put the lock back on each time you access them.

► Stove guard

A stove is a major home hazard for children. To prevent a child from playing with this appliance, a stove guard can stop your children

from getting burned by the stovetop or accidentally turning on the burners.

► Fireplace gate

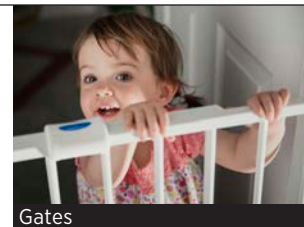
Many homes have fireplaces, and they can be significant safety hazards. Utilizing a fireplace gate is a great way to keep children safe while the fire is burning.

► Stair gates

Securing the stairs is crucial to childproofing your home. Installing stair gates prevents falls or other mishaps that could injure your child. Gates should be installed on the top and bottom of every staircase in the home.



Doorknob covers



Gates



Cabinet locks



Stove guard



Adding a motion sensor light to the outside of your home offers peace of mind and security. Here is a step-by-step process for installing one yourself.

How To Install Motion Sensor Lights

1 Turn off the electricity.

Turn off the power to the fixture at the main panel. Ensure the current is off. Rub one lead of a voltage tester against the ground wire and rub the other lead first against the hot wire (black), then the neutral wire (white). If the tester lights up, the power is on.

2 Install a larger electrical box, if necessary.

If the existing electrical box is too small, install a replacement one. Plastic boxes have the size in cubic inches stamped on them.

3 Wire the new fixture.

Mount the motion sensors according to the manufacturer's instructions. Run the wires through the

rubber gasket. Connect the neutral wires (white), hot wires (black) and ground wires (green/bare copper) with wire connectors.

4 Mount the fixture.

Screw the fixture into place. Make sure the rubber gasket seals the edges of the box so that moisture won't get in. (Pro tip: Apply a bead of clear silicone caulk around the edges, if necessary.)

5 Aim the security light.

Aim the motion detector sensor and the motion detector light at the field of view you want illuminated. Point the light bulbs to the area you want to be lit. Keep the bulbs as far away from the detector as possible.



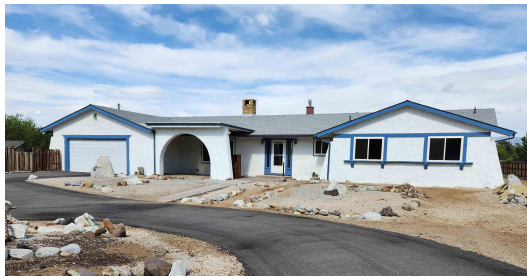
BROUGHT TO YOU BY DIANE BARTSCH, A CERTIFIED RESIDENTIAL SPECIALIST



DO YOU KNOW SOMEONE WHO IS THINKING ABOUT BUYING OR SELLING A HOME? PLEASE MENTION MY NAME.

This newsletter is for informational purposes only and should not be substituted for legal or financial advice. If you are currently working with another real estate agent or broker, it is not a solicitation for business.

SOLD: 969 Casey St, Gardnerville, NV — \$484,000



A hidden treasure on one full acre tucked on a quiet side street with room to grow! This 4 bedroom home has new carpets and laminate flooring and features an open family room adjoining the kitchen as well as a separate front living room, offering multiple living spaces.
MLS #230005347

DIANE BARTSCH
RE/MAX Realty Affiliates
1320 Hwy 395 N
Gardnerville, NV 89410
Cell: 775.781.5050
Office: 775.782.8777
dianebartrschnv@gmail.com
www.DianeBartsch.com
NV Lic #S0024801



Tips and trends for homeowners, buyers and sellers

How to Replace a Torn Window Screen

Window screens add an extra layer of protection to your home by preventing animals, insects or other debris from entering your home. Window screens can get damaged or torn but can be easily fixed or replaced in a few minutes. Take a few minutes to learn how to replace your window screen on your own.

1 Pry out the spline.

Pry out the old spline (the cord that attaches the window screen to the frame) with an awl or narrow-tipped screwdriver. Before disposing of the old spline, cut a short piece to use as a guide for getting the correct diameter for the replacement spline.

2 Secure the frame.

Secure the frame to ensure that it doesn't bow or bend while installing the new screen material.

3 Install the new window screen in the frame.

Lay the new screen over the frame; it should overlap the frame by about 3/4-1 inch. Cut each corner at a 45-degree angle slightly beyond the spline groove. This will keep the new screen from bunching in the corners.



4 Push the new screen in.

Begin installing the new spline at the corner of the frame. Use a screen rolling tool to push the spline and screen material into the groove of the frame. If wrinkles or bulges appear, remove the spline and start over. Small wrinkles should become taut as you return to the starting corner.

5 Trim the screen.

Trim excess screen material using a utility knife with a sharp blade. (A dull blade will not cut the screen material properly.)

**Say Yes
to CRS**

Buying or selling a home can seem like an overwhelming task. But the right REALTOR® can make the process easier—and more profitable.

A Certified Residential Specialist (CRS), with years of experience and success, will help you make smart decisions in a fast-paced, complex and competitive marketplace.

To earn the CRS Designation, REALTORS® must demonstrate outstanding professional achievements—including high-volume sales—and pursue advanced training in areas such as finance, marketing and technology. They must also maintain membership in the National Association of REALTORS® and abide by its Code of Ethics.

Work with a top-producing REALTOR®—contact a CRS today.

