

Practice **SAFE** Barbecuing: Grill Your Burgers Not Your Home

Nearly 80 percent of U.S. households own an outdoor barbecue appliance and nearly 60 percent use them year-round, according to the Hearth, Patio & Barbecue Association (HPBA).

But firing up a grill with an open flame presents a clear and present fire danger, especially in confined spaces. Many jurisdictions place limits on where you can use a grill.

For years, New York City has prohibited propane barbecue grilling on a balcony, terrace or roof. Residents can barbecue with charcoal on a balcony or terrace, provided there's sufficient clearance and a source of water to douse any flare-ups.

Washington State bans open-flame gas or charcoal barbecues on certain multifamily housing balconies where there's no overhead sprinkler.

And Silicon Valley has placed a permanent ban on charcoal and gas-fired grills on multifamily housing balconies made of wood or other combustible materials, if there is no sprinkler overhead. Propane tanks heavier than one pound are forbidden on such balconies – sprinkler or not.

Residential barbecue bans amount to gustatory purgatory for a growing number of barbecue fans who have to wait get their thrill from a grill away from home.

The U.S. Fire Administration's National Fire Data Center estimates that barbecuing accounts for more than 6,000 fires, 170 injuries, a half-dozen fatalities and

some \$35 million in property loss each year.

Grilling responds to our primal longing for fire-kissed feasts, but singeing sustenance into submission comes with another primal directive – protecting life and property.

The HPBA offers these tips to get you safely through a barbecued meal. (More detailed, grill-specific precautions are available in the "Barbecue" section of the association's Web page: www.hpba.org.)

- Read the owner's manual. As simple as it sounds, many fail to follow instructions in their rush to barbecue heaven. The manual contains specific assembly, use and safety procedures, as well as manufacturer contact information.
- Never use a grill indoors. Barbecuing in your trailer, tent, house, garage, fireplace or any enclosed area can create a carbon monoxide hazard and kill you. Barbecue smoke can clog your fireplace flue.
- Even outdoors, use a well-ventilated area. Laws prohibit use on certain small balconies if they don't have sufficient clearance from the building, can produce a back draft into the home, or provide limited safe maneuvering space. Set the grill away from buildings, overhead combustibles, dry leaves, brush and swimming pools and swimmers. Beware of wind-blown sparks.
- Follow other codes. Electric grills or accessories (rotisseries, etc.) must be properly grounded in accordance with local codes. Place electrical cords out of traffic, walkways or where people can trip over them.

By Broderick Perkins



- **Keep the grill still. Be sure all parts of the grill are level and firmly in place so that it cannot be tipped over. Don't allow play or young children near the grill. Never attempt to move a hot grill. If you stumble and drop the grill, you can get a nasty burn.**
- **Use the proper equipment, including long-handled utensils designed for barbecue work, to avoid burns and splatters. Wear clothing that doesn't have hanging shirt tails, frills or apron strings that can catch fire, and use flame-retardant mitts when adjusting hot vents.**
- **Keep the fire controlled. To put out flare-ups, either raise the food grid, spread out the coals evenly, or adjust the controls to reduce oxygen and/or lower the temperature. If you must douse the flames with a light spritz of water, first remove the food from the grill. Never leave a grill unattended once lit.**
- **Be ready to extinguish flames. Use baking soda to control a grease fire and have a fire extinguisher handy. Keep a bucket of sand or a garden hose near if you don't have a commercial extinguisher.**
- **Buy a grill pad or splatter mat. Heat-resistant pads placed beneath the grill are usually made of lightweight composite cement or plastic and will protect your deck or patio from any grease that misses the drip pan.**



© 2008 Realty Times®. All Rights Reserved.



729 Mammoth Way

What a deal for this custom home on a huge corner lot offering all the yard you need for RV's, gardens, a basketball court; you name it! This stucco residence has a huge country kitchen with loads of cabinets and an eat-in nook that views the mountain tops. Featured are a cozy wood burning stove with rock hearth, the Bonus Room and a separate formal dining room with beautifully arched entry that could be used as an office, library, or media room. Offered at \$249,000. MLS #100009318



1827 Bougainvillea

Clean Winhaven home featuring a spacious Kitchen that opens to the Family Room and its cozy gas log fireplace surrounded by shelving niches for entertainment equipment or collectibles. A double door entry off the Family Room enters the 3rd Bedroom making it a great location for home office. Recent upgrades include slate and laminate flooring as well as a newly tiled Master Shower with pebbled flooring and granite counter tops. Offered at \$289,900 MLS #100005211

Nobody in the World Sells More Real Estate Than RE/MAX.

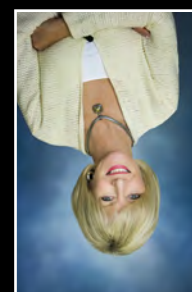
©RE/MAX International, Inc. All rights reserved. Each RE/MAX® real estate office is independently owned and operated. 081115



RE/MAX REALTY AFFILIATES
Diane Bartsch
 1320 Highway 395
 Gardnerville, NV 89410



Compliments of



Diane Bartsch
 CRS, CDPE, SALESPERSON
 775. 783. 6846 (Direct)
 775. 781. 5050 (Cellular)
 dianehome@aol.com
 www.dianebartsch.com